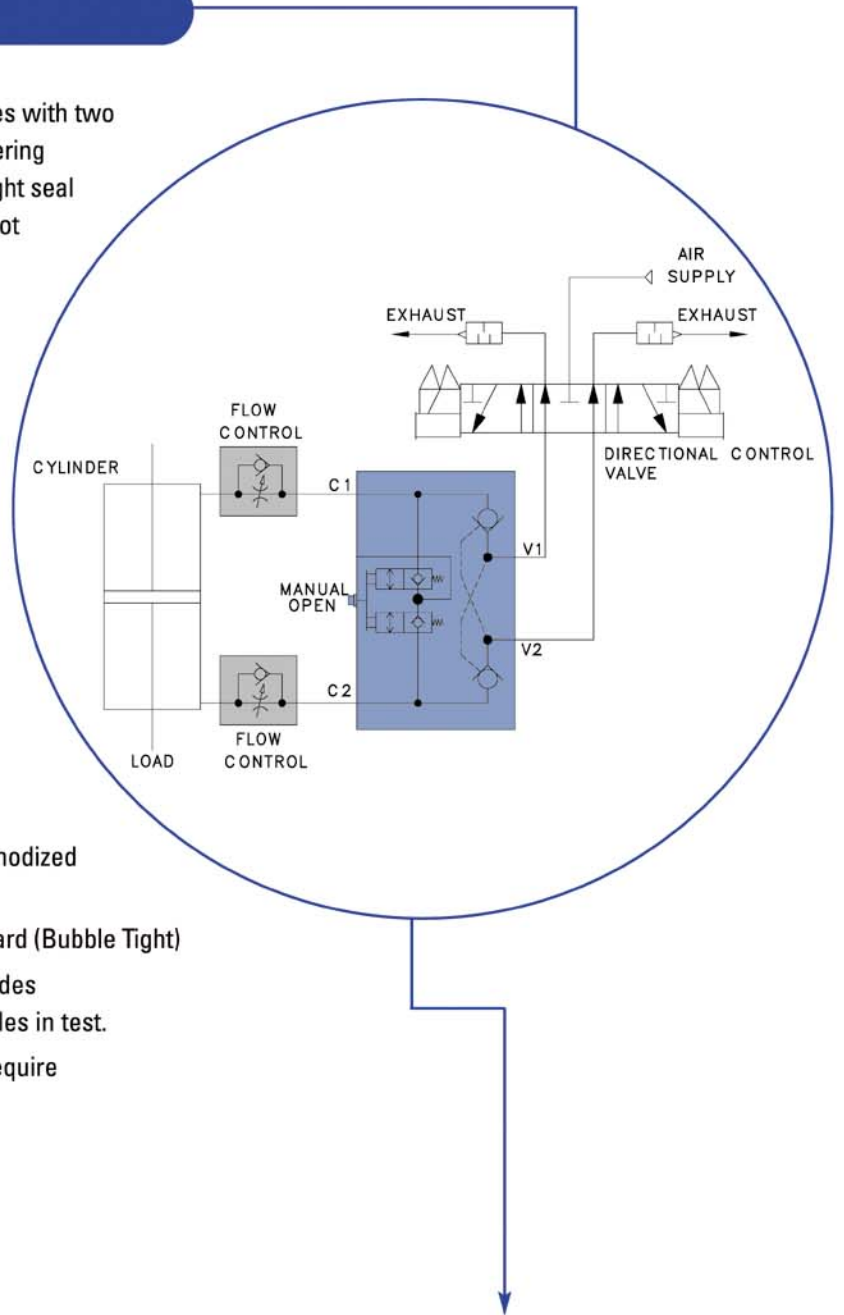


# DUAL-CHECK™ VALVES

Dual-Check™ Valves are soft start valves with two check valves in one unit. The self-centering spool in the valve maintains a bubble-tight seal for emergency stopping. An internal pilot provides a quick response time, and eliminates the need for external pilot lines, thus preventing potential leaks and simplifying installation. Available with manual release capabilities.

## Features

- Prevents load drift
- Provides rapid stopping of load
- Can provide multiple position control
- Designed for non-lubricated systems
- Operating pressure 15-150 psi and temperature 30-150°F
- Flow capacity 1.1 Cv to 1.9 Cv
- Made of high strength, lightweight, anodized aluminum alloy
- Exceeds A.N.S.I. Class VI Leak Standard (Bubble Tight)
- Superior, self-cleaning ball seal provides long product life, over 100 million cycles in test.
- All valves are tamper resistant and require no maintenance.
- Patented and made in the USA

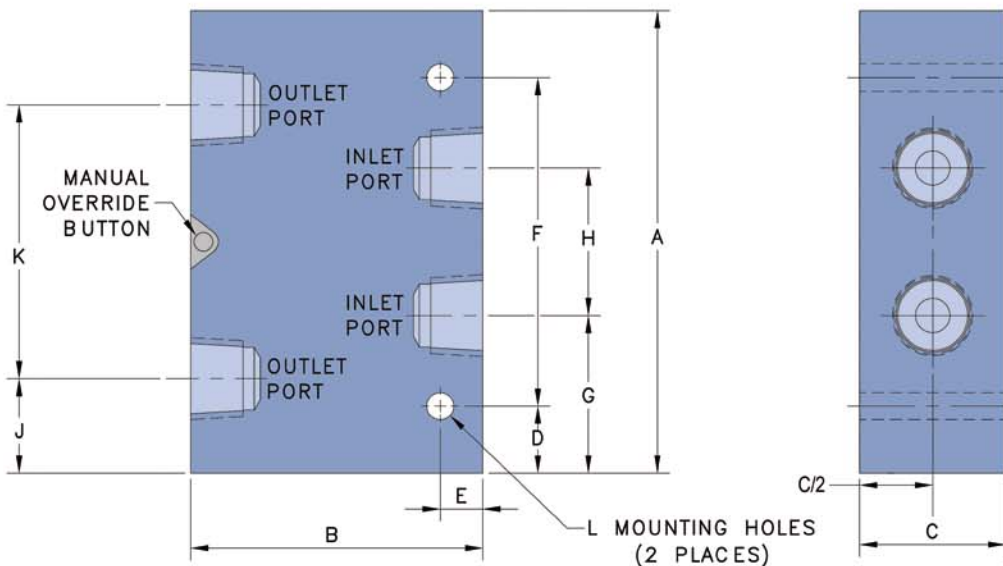


## DIMENSIONAL DATA

## SPECIFICATIONS

Port Size	A	B	C	D	E	F	G	H	J	K	L	Pilot Port	Cv	Weight Lbs.	Cracking Pressure	Pilot Ratio
1/8"	3.38	1.75	1.00	0.69	0.25	2.00	1.17	1.03	0.68	2.02	0.28	NA	1.1	0.75	2.0 psi	3:1
1/4"	4.75	2.50	1.50	0.69	0.31	3.38	1.62	1.51	0.97	2.81	0.28	NA	1.9	1.50	2.0 psi	4:1
3/8"	4.75	3.00	1.50	0.69	0.44	3.38	1.62	1.51	0.97	2.81	0.28	NA	1.9	2.00	2.0 psi	4:1
1/2"	4.75	3.00	1.50	0.69	0.44	3.38	1.62	1.51	0.97	2.81	0.28	NA	1.9	2.00	2.0 psi	4:1

\* A-L All dimensions in inches



## ORDERING INFORMATION

To order please indicate your part number(s) by formulating the desired style number for each of the corresponding areas from the list below. See the sample part number at right.

Button Style	Port Size	Seal Type	Options
SA162	SAMPLE 38	SA01E	SAMPLE SA (if required) SAMPLE

### Button Style:

Style	Description
60	Pilot Operated with Override Button
61	Pilot Operated with Flush Override Button
62	Pilot Operated with No Override Button

### Port Size:

Style	Description
12	1/8" NPTF (Not Available in Button Style 60)
25	1/4" NPTF
38	3/8" NPTF
50	1/2" NPTF

### Seal Type:

Style	Description	Status
01	Buna N Seals – (Temperature range -30 to 150°F)	In-Stock
02	Viton Seals – (Temperature range -15 to 400°F)	Limited Stock

### Options:

Style	Description	Status
BSPP	British Standard Parallel Ports G (Rp full form)	Limited Stock
SS	Stainless Steel, all parts	Limited Stock

\* Options can be combined; please call with any questions

**ALADCO®**

W227 N546 Westmound Dr., Waukesha, WI 53186-1653  
Tel 262-544-5994 • Fax 262-544-0116 • www.aladco.com

**For Order Information Call • 1-800-383-6994**

Improvements to ALADCO products are being actively investigated, so product characteristics may be subject to improvement without notice

