

EQUA-CHECK™ VALVES

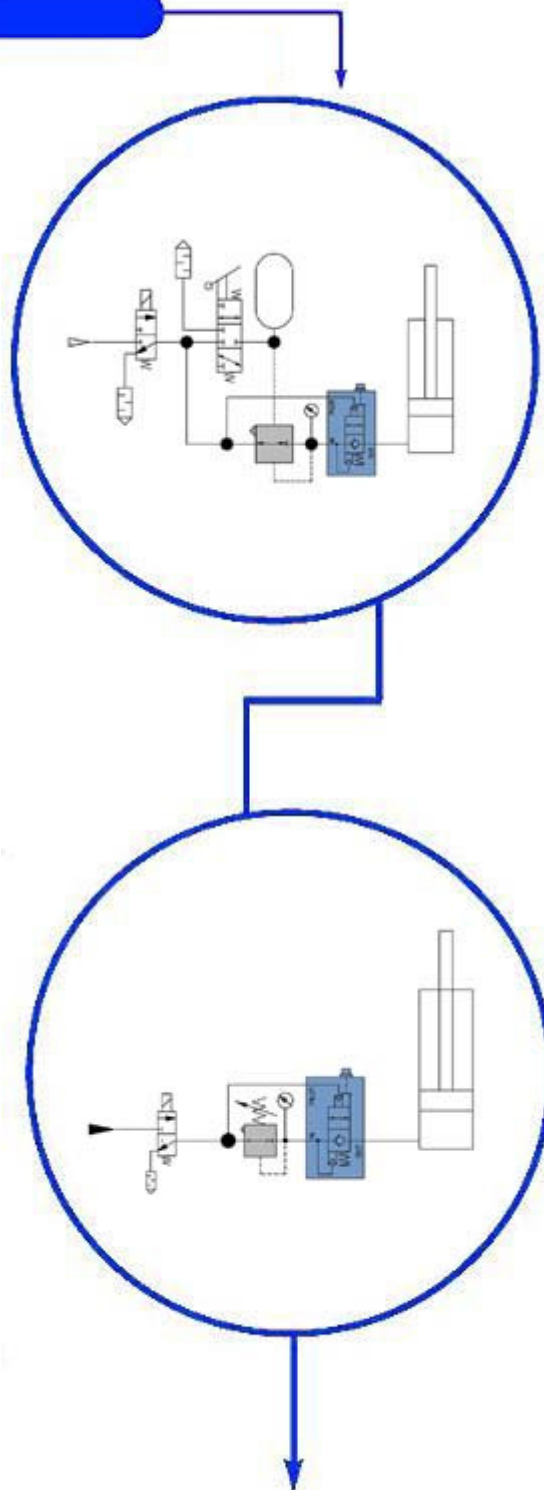
The Equa-Check™ Valve, designed specifically for pneumatics, is a patented ALADCO® product. It is the only check valve on the market with both manual and pilot release capabilities. Equa-Check™ Valves are air pilot operated check valves with equal internal balancing between the IN pressure and the PILOT pressure. The internal pressure balancing in the valve enables it to perform some unique controlling functions in pneumatic applications. Load balancing systems are a type of application that can benefit from the functions of an Equa-Check™ Valve.

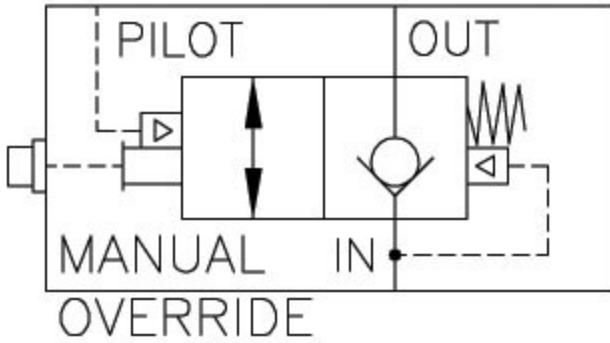
The Equa-Check™ Valve has not been designed for use on vacuum, air over oil or high pressure applications.

Click on diagrams at right to enlarge

Features

- All valves are manufactured tamper resistant and require no maintenance
- Superior, self cleaning ball seal provides long leak tight product life
- High strength valve body made of anodized aluminum or stainless steel
- Does not require lubricated air
- Operating pressure 15 - 120 psi
- Cracking pressure 2 - 4 psi
- Exceeds A.N.S.I. Class VI Leak Standard (Bubble Tight) for 1/2" port size

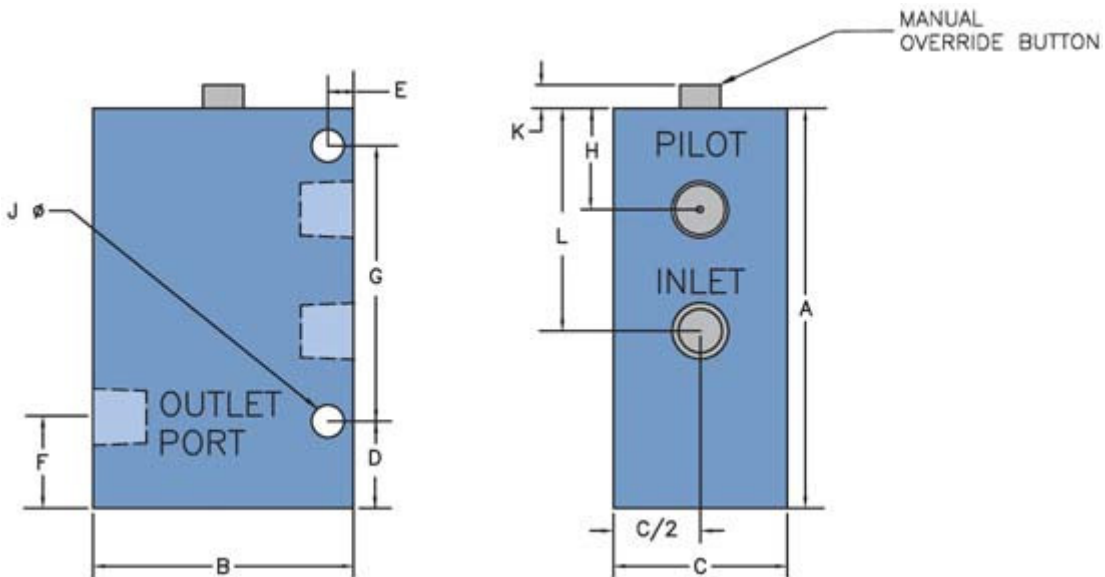




DIMENSIONAL DATA | **SPECIFICATIONS**

Port Size	A	B	C	D	E	F	G	H	J	K	L	Pilot Port	Cv	Weight AL	Weight SS	Pressure Bias PSI
10-32	1.75	1.00	0.75	1.20	0.85	0.40	N/A	0.25	0.18	0.20	0.83	10-32	0.2	0.15	0.30	8
1/8"	2.60	1.50	1.00	0.60	0.20	0.63	1.75	0.63	0.22	0.20	1.20	1/8"	0.8	0.40	0.90	5
1/4"	3.83	2.50	1.50	0.19	2.10	0.85	2.38	0.63	0.28	0.22	1.93	1/4"	1.7	1.50	3.50	5
3/8"	3.83	2.50	1.50	0.19	2.10	0.85	2.38	0.63	0.28	0.22	1.93	1/4"	1.7	1.50	3.50	5
1/2"	3.83	2.50	1.50	0.19	2.10	0.85	2.38	0.63	0.28	0.22	1.93	1/4"	1.7	1.50	3.50	5

* A-L All dimensions in inches



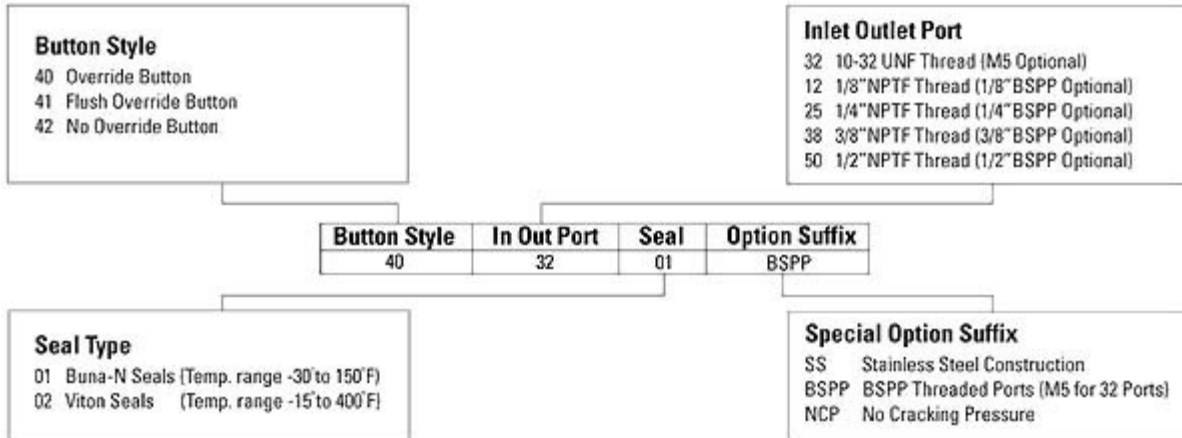
Note: 10-32 UNF models have only one mounting hole

[Click here for CAD Files, Schematics, and Technical Information Files](#)

ORDERING INFORMATION

To order please indicate your part number(s) by formulating the desired style number for each of the corresponding areas from the list below. See the sample part number at right.

Button Style	Port Size	Seal Type	Options
40	32	01	(if required)



[Click Here for Current Pricing](#)

[Nu-Check](#) | [Dual Check](#) | [Clean-Check](#) | [Air-Fuse](#) | [Balance-Check](#) | [Equa-Check](#) |
[Circuit Diagrams](#) | [Reference & CAD Files](#) | [RFQ](#) | [Contact Us](#) |