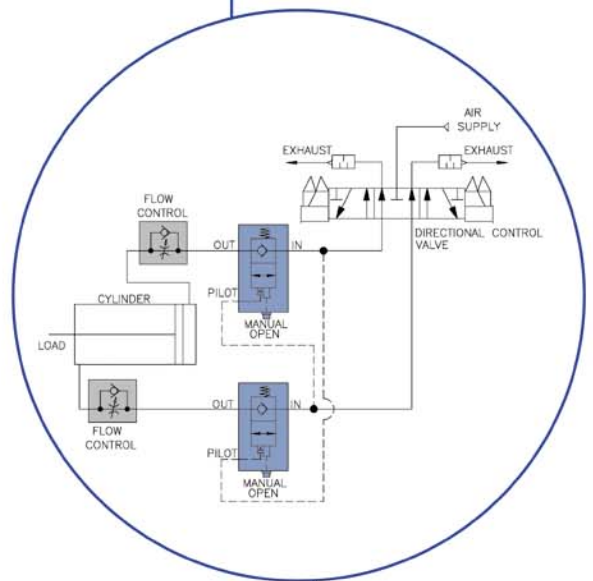
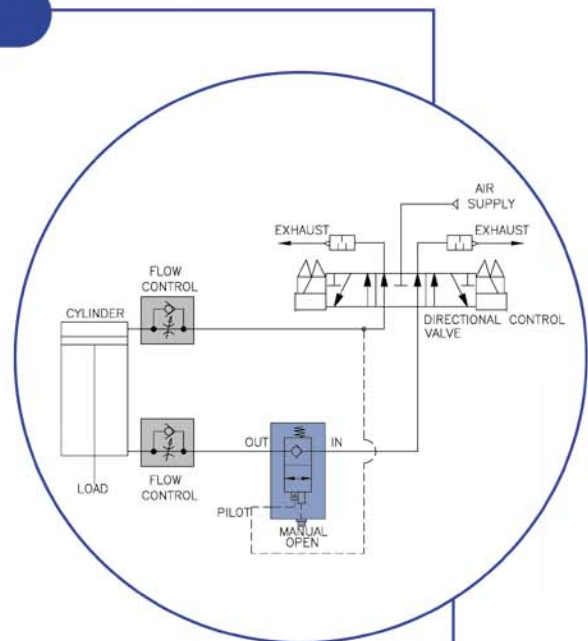


NU-CHECK® VALVES

The Nu-Check® Valve, designed specifically for pneumatics, is a patented ALADCO product. It is the only check valve on the market with both pilot and manual release capabilities. The unique bubble-tight seal keeps devices in "checked" position. If pressure loss or fluctuation should occur, the valve prevents drifting. To release the seal, simply operate the pilot or depress the manual override button.

Features

- Prevents load drift
- Provides rapid stopping of load
- Designed for non-lubricated systems
- Operating pressure 15-150 psi and temperature 30-150° F
- Flow capacity 0.2 Cv to 4.0 Cv
- Made of high strength, lightweight, anodized aluminum alloy
- Exceeds A.N.S.I. Class VI Leak Standard (Bubble Tight)
- Superior, self-cleaning ball seal provides long product life, over 100 million cycles in test.
- All valves are manufactured tamper resistant and require no maintenance.
- Patented and made in the USA

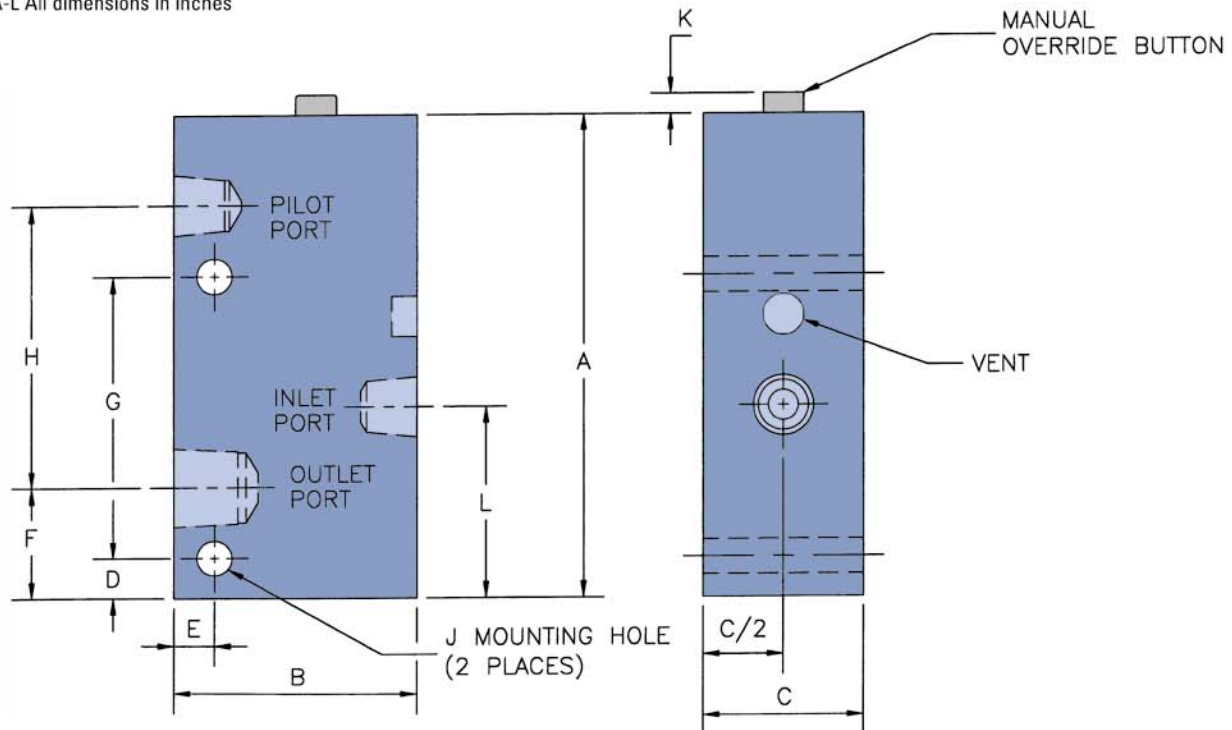


DIMENSIONAL DATA

SPECIFICATIONS

Port Size	A	B	C	D	E	F	G	H	J	K	L	Pilot Port	Cv	Weight Lbs.	Cracking Pressure	Pilot Ratio
10-32	1.94	1.00	0.75	1.28	0.15	0.38	N/A	1.30	0.18	0.18	0.82	10-32	0.2	0.25	2.0 psi	4:1
1/8"	3.00	1.50	1.00	0.25	0.25	0.69	1.75	1.75	0.22	0.13	1.19	1/8"	0.4	0.50	2.0 psi	4:1
1/4"	3.83	2.00	1.50	0.25	0.38	0.85	2.38	2.34	0.28	0.22	1.50	1/4"	1.7	1.25	2.0 psi	4:1
3/8"	3.83	2.50	1.50	0.25	0.38	0.85	2.38	2.34	0.28	0.22	1.50	1/4"	1.7	1.50	2.0 psi	4:1
1/2"	3.83	2.50	1.50	0.25	0.38	0.85	2.38	2.34	0.28	0.22	1.50	1/4"	1.7	1.50	2.0 psi	4:1
3/4"	5.55	3.00	2.00	2.00	0.42	1.04	2.00	3.88	0.28	0.20	2.58	1/4"	4.0	3.00	2.0 psi	3:1
1"	5.55	3.00	2.00	2.00	0.42	1.04	2.00	3.88	0.28	0.20	2.51	1/4"	4.0	3.00	2.0 psi	3:1

* A-L All dimensions in inches



Note: 10-32 UNF models have only one mounting hole

ORDERING INFORMATION

To order please indicate your part number(s) by formulating the desired style number for each of the corresponding areas from the list below. See the sample part number at right.

Button Style	Port Size	Seal Type	Options
SAMPLE 30	SAMPLE 32	SAMPLE SA 01	(if required) SAMPLE

Button Style:

Style	Description
30	Pilot Operated with Override Button
31	Pilot Operated with Flush Override Button
32	Pilot Operated with No Override Button

Port Size:

Style	Description
32	10-32 UNF
12	1/8" NPTF
25	1/4" NPTF
38	3/8" NPTF
50	1/2" NPTF
75	3/4" NPTF
01	1" NPTF

Seal Type:

Style	Description	Status
01	Buna N Seals – (Temperature range -30 to 150 °F)	In-Stock
02	Viton Seals – (Temperature range -15 to 400°F)	Limited Stock

Options:

Style	Description	Status
BSP	British Standard Parallel Ports G (Rp full form)	Limited Stock
HP	High Pressure, 350 psi rating	In-Stock
NCP	No Cracking Pressure (0 psi cracking pressure)	In-Stock
SS	Stainless Steel, all parts	Limited Stock
VAC	Vacuum Application	In-Stock

* Options can be combined; please call with any questions

ALADCO®

W227 N546 Westmound Dr., Waukesha, WI 53186-1653
Tel 262-544-5994 • Fax 262-544-0116 • www.aladco.com

For Order Information Call • 1-800-383-6994

Improvements to ALADCO products are being actively investigated, so product characteristics may be subject to improvement without notice

