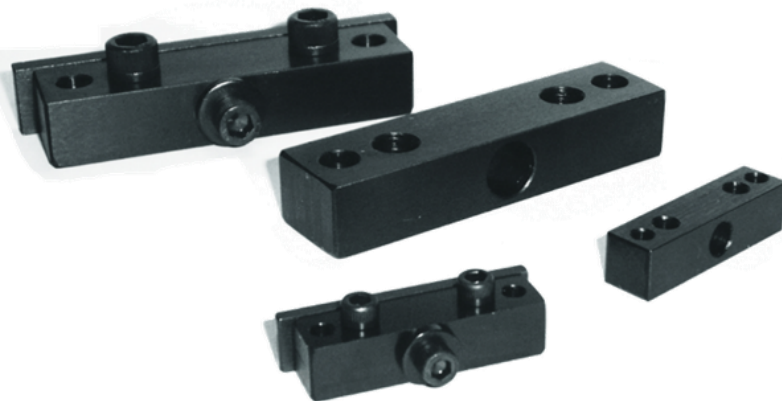
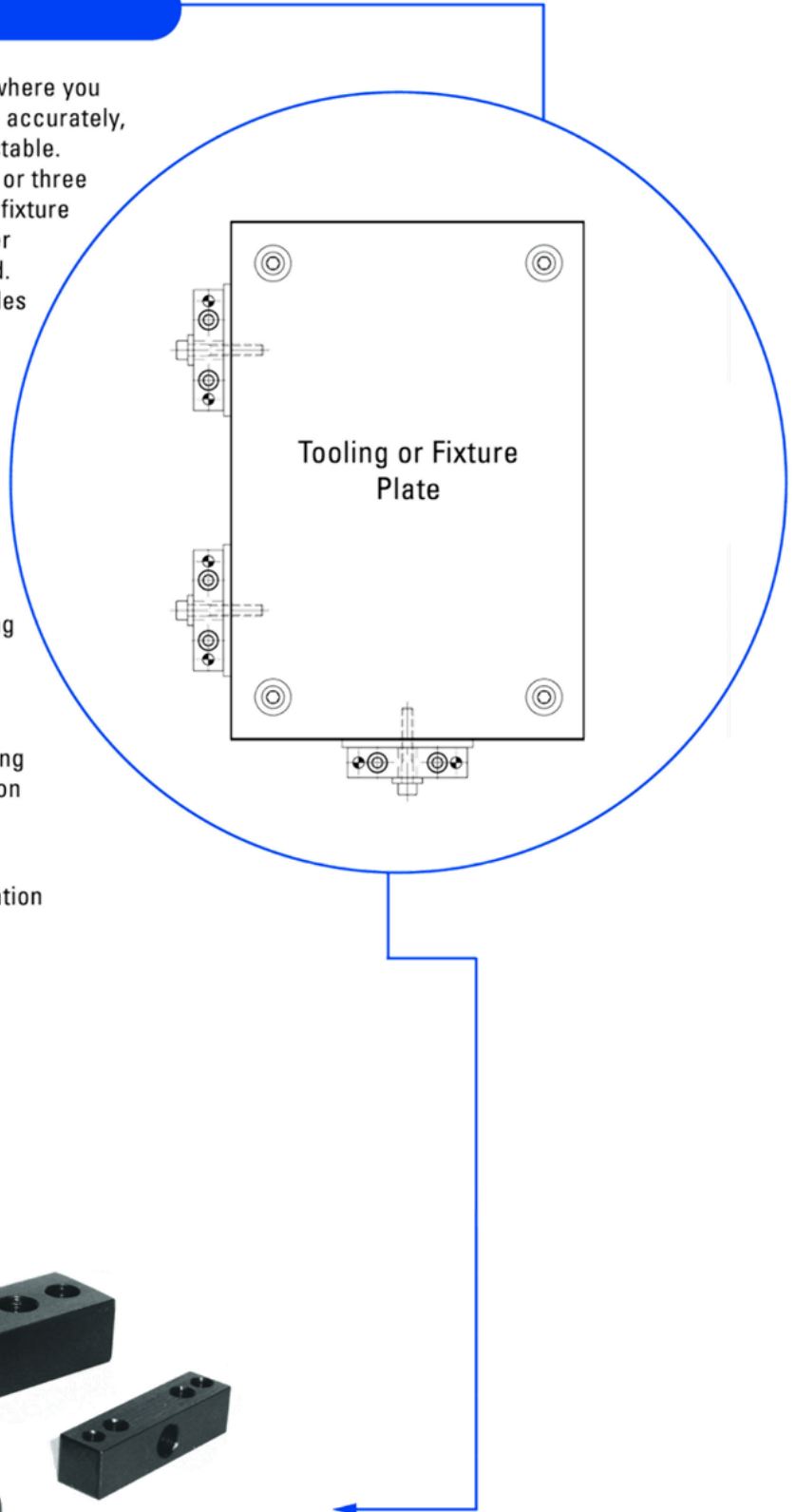


Tooling Locator Block

Tooling Locator Blocks are used anywhere you need a positive locating position held accurately, but also need the position to be adjustable. Typically they are used in sets of two or three for the X & Y locations of a tooling or fixture plate. They incorporate a grind spacer that allows for position to be adjusted. Available with finished size dowel holes ready to use, or in semi-finished condition for doweling at assembly.

Features

- Quick and inexpensive way to locate and mount tooling plates and components
- Available in 2 standard sizes
- Simple to adjust location by grinding spacer to size
- All needed hardware included
- Semi finished version allows locating at assembly and doweling in position
- Made from low carbon steel with a black oxide finish. Finished version ground to close tolerances for location
- Made in the U.S.A.



DIMENSIONAL DATA

SPECIFICATIONS

Part Number	A	B	C	D	E	F	G	H	I	J	K
AEM500100	.38"	2.00"	4.00"	1.000"	2.000"	3.250"	.500"	.250"	.359" Dia.	5/16-18 x 2.00"	3/8-16 x 1.25"
AEM500103	.38"	2.00"	4.00"	1.0000"	2.000"	3.2500"	.5000"	.250"	.375" Dia.	5/16-18 x 2.00"	3/8-16 x 1.25"
AEM500120	.19"	1.00"	2.00"	1.0000"	1.000"	1.6250"	.5000"	.125"	.375" Dia.	10-32 x 1.25"	10-32 x 1.00"

Part Number	L	M	N
AEM500100	.7500"	.38"	.625"
AEM500103	.7500"	.38"	.625"
AEM500120	.5000"	.25"	.313"

