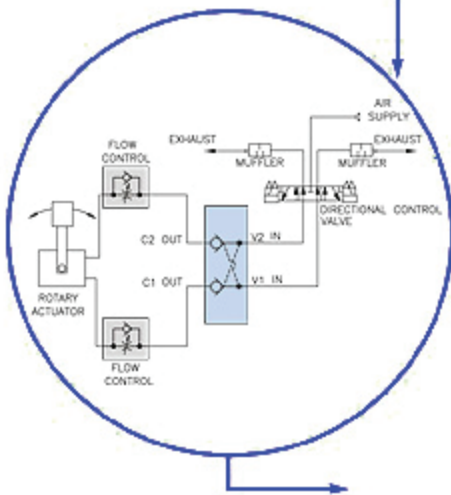
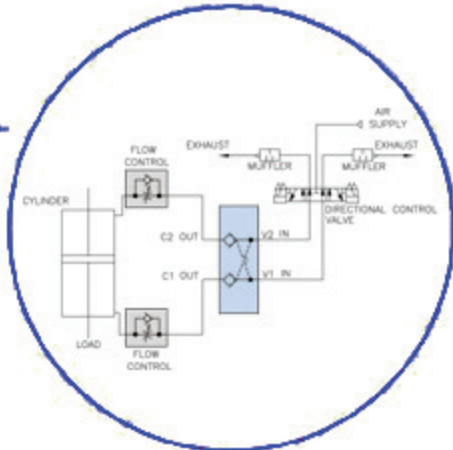


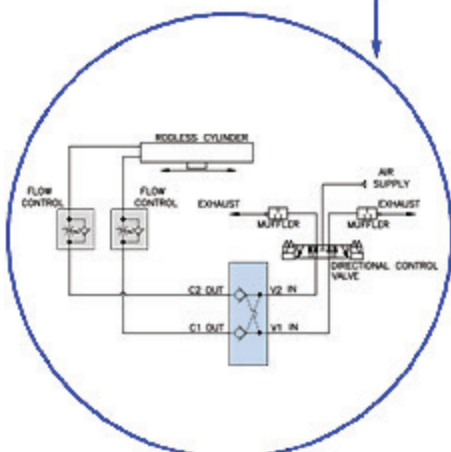
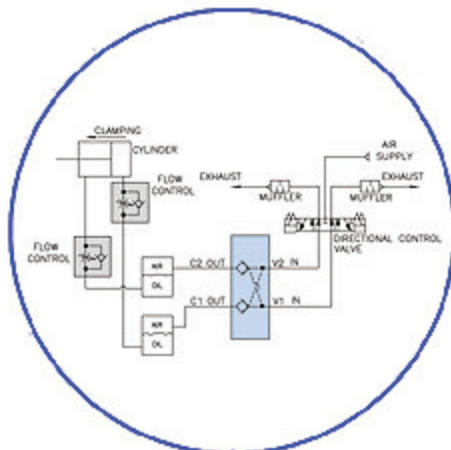
DUAL-CHECK™ CIRCUIT DIAGRAMS

E-STOP SYSTEM



ONE VALVE USED TO STOP ROTARY ACTUATOR

HOLDING CLAMPING FORCES BY TRAPPING AIR IN AIR-OVER-OIL SYSTEM



CYLINDER POSITIONING SYSTEM