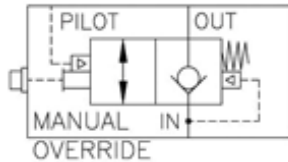
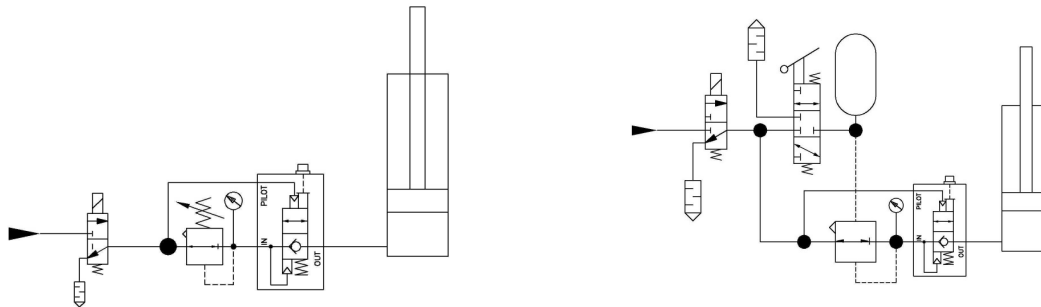


EQUA-CHECK™ VALVES

Aladco® Equa-Check™ valves are normally engaged air pilot operated check valves where there is internal pressure balance between the IN pressure and the PILOT pressure. The valve will allow two way flow as long as the PILOT pressure is slightly higher than the IN port pressure, which makes them an ideal safety component for pneumatic balancing and tensioning systems. The standard Equa-Check™ valve has manual override capability.



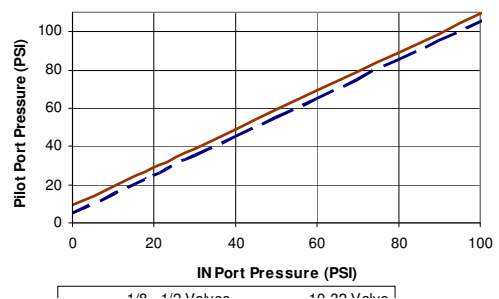
A typical use of a Equa-Check™ valve involves combining it with a pressure regulator system to control air flow to and from one port of a tensioning or balancing cylinder. With an appropriate combination of a pressure controller and other pneumatic components, a control system using a Equa-Check™ allows two way flow for normal balancing or tensioning operation and position lock under supply pressure loss, standby or safety stop conditions. A combined valve system can have excellent failsafe and assured control properties. Examples of two balancer system circuits are shown below:



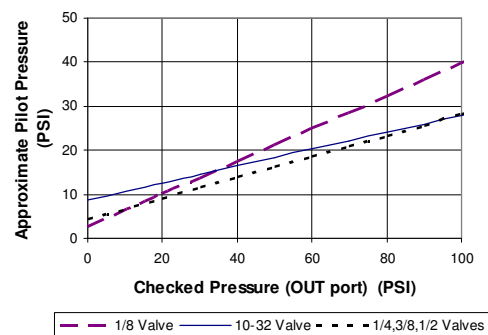
Equa-Check™ Features

- The rugged standard valve body is anodized 6061 aluminum. Standard internal aluminum components are 6061 aluminum.
- Springs are high fatigue resistant nickel coated 302 Stainless Steel. (MTTF is over 100 million cycles).
- Standard seals are BunaN (-30 to 150F temperature range). Viton seals (-15 to 400F temperature range) are an available option. (MTTF of both types of seals are over 10 years or over 40 million cycles).
- Typical operating pressure range is 15-140 PSI.
- The valves are tamper resistant and do not require maintenance. The valves do not require lubricated air, but can be used with lubricated air.

Equa-Check Valve - Unpiloting Pressure



Equa-Check - Piloting Pressure



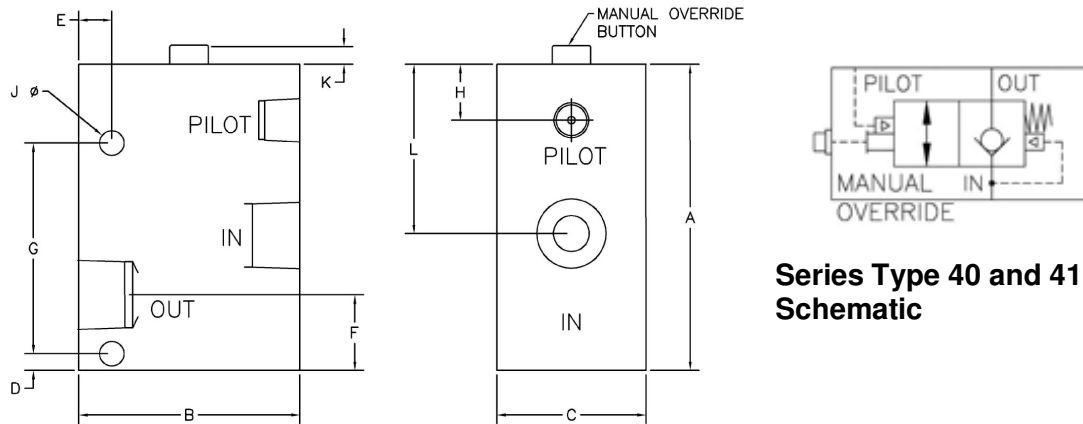
Aladco, LLC
1100B South Prairie Ave., Waukesha, WI 53186-1653
Tel 262-544-5994 • www.aladco.com

DIMENSIONAL DATA

SPECIFICATIONS

Port Size	A	B	C	D	E	F	G	H	J	K	L	Pilot Port	Cv	Weight lb
10-32	1.75	1.00	0.75	1.20	0.85	0.40	---	0.25	0.18	0.2	0.83	10-32	0.2	0.15
1/8"	2.60	1.50	1.00	0.60	0.20	0.63	1.75	0.63	0.22	0.2	1.20	1/8"	0.8	0.4
1/4"	3.46	2.50	1.50	0.19	2.10	0.85	2.38	0.63	0.28	0.22	1.93	1/4"	1.7	1.5
3/8"	3.46	2.50	1.50	0.19	2.10	0.85	2.38	0.63	0.28	0.22	1.93	1/4"	1.7	1.5
1/2"	3.46	2.50	1.50	0.19	2.10	0.85	2.38	0.63	0.28	0.22	1.93	1/4"	1.7	1.5

* A - L dimensions in inches



Series Type 40 and 41 Schematic

MODEL ORDERING INFORMATION Valve model numbers are made up of 3 two character fields (6 total characters) with an optional suffix.

SEAL TYPE
01 - BunaN Seals
02 - Viton Seals

OPTION SUFFIX

Blank NPTF Threaded ports
BSPP BSPP Threaded ports
M5 M5 Threaded port (32 block)
SS Stainless Steel Construction

Model Number



MODEL TYPE

40 Equa-Check -- Extended Override Button
41 Equa-Check -- Flush Override Button
42 Equa-Check -- No Manual Override

INLET OUTLET PORT THREADING

32 10-32 UNF Thread (M5 optional)
12 1/8" NPTF Thread (1/8" BSPP optional)
25 1/4" NPTF Thread (1/4" BSPP optional)
38 3/8" NPTF Thread (3/8" BSPP optional)
50 1/2" NPTF Thread (1/2" BSPP optional)

Model example:

Model **401201BSPP** is an Equa-Check valve with 1/8" BSPP Inlet/Outlet and Pilot ports, BunaN seals and an extended override button.

Aladco, LLC
 1100B South Prairie Ave., Waukesha, WI 53186-1653
 Tel 262-544-5994 • www.aladco.com

Rev 9-13

