

CLEAN-CHECK® PNEUMATIC CHECK VALVE



The Aladco® Clean-Check® valve is a normally closed check valve that can be either overridden manually or by air piloting to allow two-way flow. The tightly sealed Clean-Check® valves are used on pneumatic devices to stop motion upon loss of air pressure and prevent the device from drifting.

The Clean-Check® valve, being vent free, is designed specifically for pneumatic applications used in clean/sanitary environments. The Clean-Check® valve is also highly tolerant of external dust, dirt, oil, grease, detergent, cleaning solutions, and cutting fluids. The unique bubble-tight seal keeps devices from drifting towards the “checked” position in the event of pressure loss or fluctuation. To release the seal, press the manual override button or operate the pilot.

Aladco® highly recommends the use of spring centered 3 position 5-way centered vented valves for directional control with the use of Clean-Check® valves.

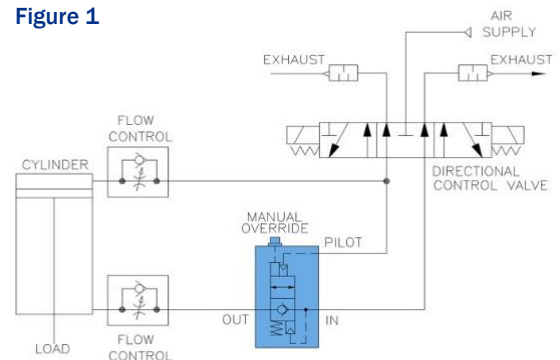
Features:

- Superior, self-cleaning ball and seat seal provides long product life
- Exceeds ANSI Class VI Leak Standard (bubble tight)
- Body is made of high strength, lightweight, anodized 6061 aluminum alloy (Stainless steel 303 is optional in some models)
- Variety of porting options
- Designed for use with lubricated or non-lubricated air systems
- Tamper resistant with no required maintenance
- Prevents load drift and provides rapid stopping of load
- Fully sealed for use in clean/sanitary environments
- Patented and Made in Waukesha, Wisconsin USA
- Standard 3-year warranty

Additional Notes:

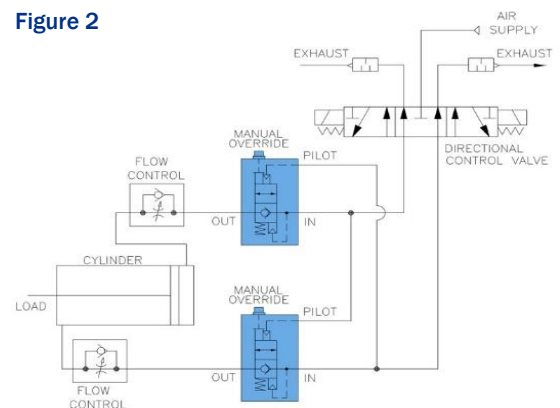
- MTTF is over 100 million cycles for Buna-N seals and over 40 million cycles for Viton® seals
- NPTF Ports conform to ASME B1.20.1-2013 Pipe Threads, General Purpose (Inch)
- BSPP (G) and M5 Ports conform to ISO 16030:2003: Pneumatic fluid power – Connections – Ports and stud ends
- Operating pressure 15 to 150 psi
- Operating temperature 30° to 150° F
- 10-32 UNF models have only one mounting hole
- This valve has not been designed for use on vacuum, air over oil or high pressure applications

Figure 1



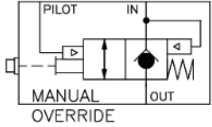
An example of a system using a single Clean-Check® valve that will prevent the cylinder or load from falling upon pressure loss or upon loss of power to directional control valve.

Figure 2

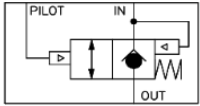


An example of a system using two Clean-Check® valves that will stop the cylinder from moving in either direction upon pressure loss or upon loss of power to directional control valve.

Clean-Check® Pneumatic Check Valve Specifications:



Model Type 50 & 51



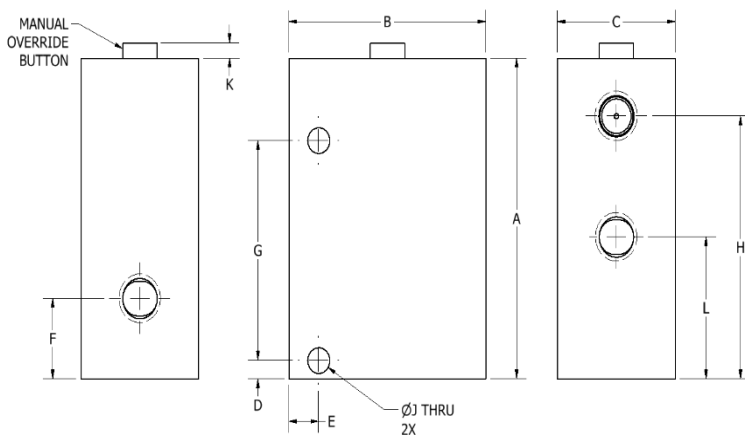
Model Type 52

CLEAN-CHECK® DIMENSIONS & SPECIFICATIONS

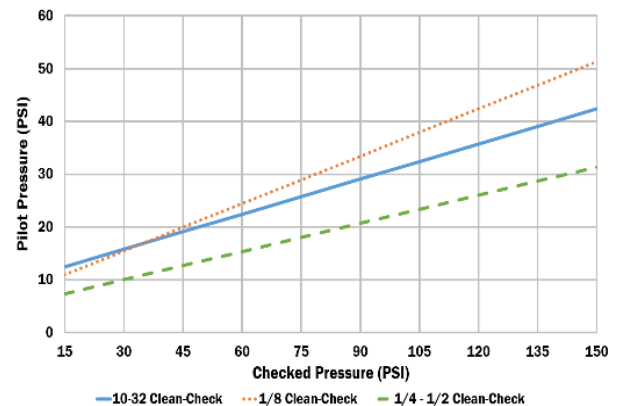
Inlet-Outlet Port Size	A	B	C	D	E	F	G	H	J	K	L	Pilot Port Size	Cracking Pressure	CV	Pilot Ratio	Weight (AL)	Weight (SS)
#10-32	1.75	1.00	0.75	1.15	0.15	0.39	NA	1.50	0.19	0.18	0.84	#10-32	2 - 4 PSI	0.2	2.7:1	0.20	0.40
1/8	2.61	1.50	1.00	0.20	0.19	0.63	1.75	1.98	0.22	0.18	1.17	1/8	2 - 4 PSI	0.8	2.5:1	0.40	1.00
1/4	3.46	2.50	1.50	0.20	0.38	0.87	2.38	2.83	0.28	0.17	1.53	1/4	2 - 4 PSI	1.7	3.8:1	1.20	3.20
3/8	3.46	2.50	1.50	0.20	0.38	0.87	2.38	2.83	0.28	0.17	1.53	1/4	2 - 4 PSI	1.7	3.8:1	1.20	3.20
1/2	3.46	2.50	1.50	0.20	0.38	0.87	2.38	2.83	0.28	0.17	1.53	1/4	2 - 4 PSI	1.7	3.8:1	1.20	3.20

*All A-L dimensions in inches; weight in pounds. Pilot Ratio is measured at 60 PSI

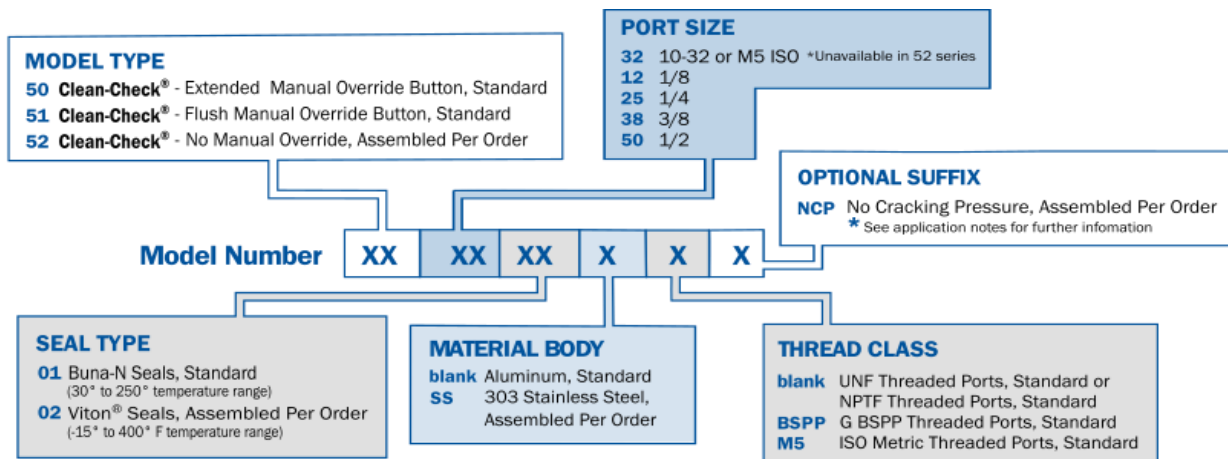
Disclaimer: Technical details subject to change without notice



Clean-Check® Pilot Pressure vs Checked Pressure



Model Ordering Information:



Model Examples:

Model 511201 is a Clean-Check® valve with 1/8" NPTF threaded Inlet-Outlet port, Buna-N seal, Aluminum body, and flush override button.

Model 502501SSBSPP is a Clean-Check® valve with 1/4G BSPP threaded Inlet-Outlet port, Buna-N seal, 303 Stainless Steel body, and an extended override button.

Manufacturer of Nu-Check®, Dual-Check®, Clean-Check® and Equa-Check® Pilot Operated Pneumatic Check Valves and Accu-Locator™ Shim Block Assemblies

Aladco.com

1100B South Prairie Avenue, Waukesha, WI 53186
262-544-5994 | AladcoSales@AEM-Aladco.com

©2025 ALADCO, LLC - ALL RIGHTS RESERVED

